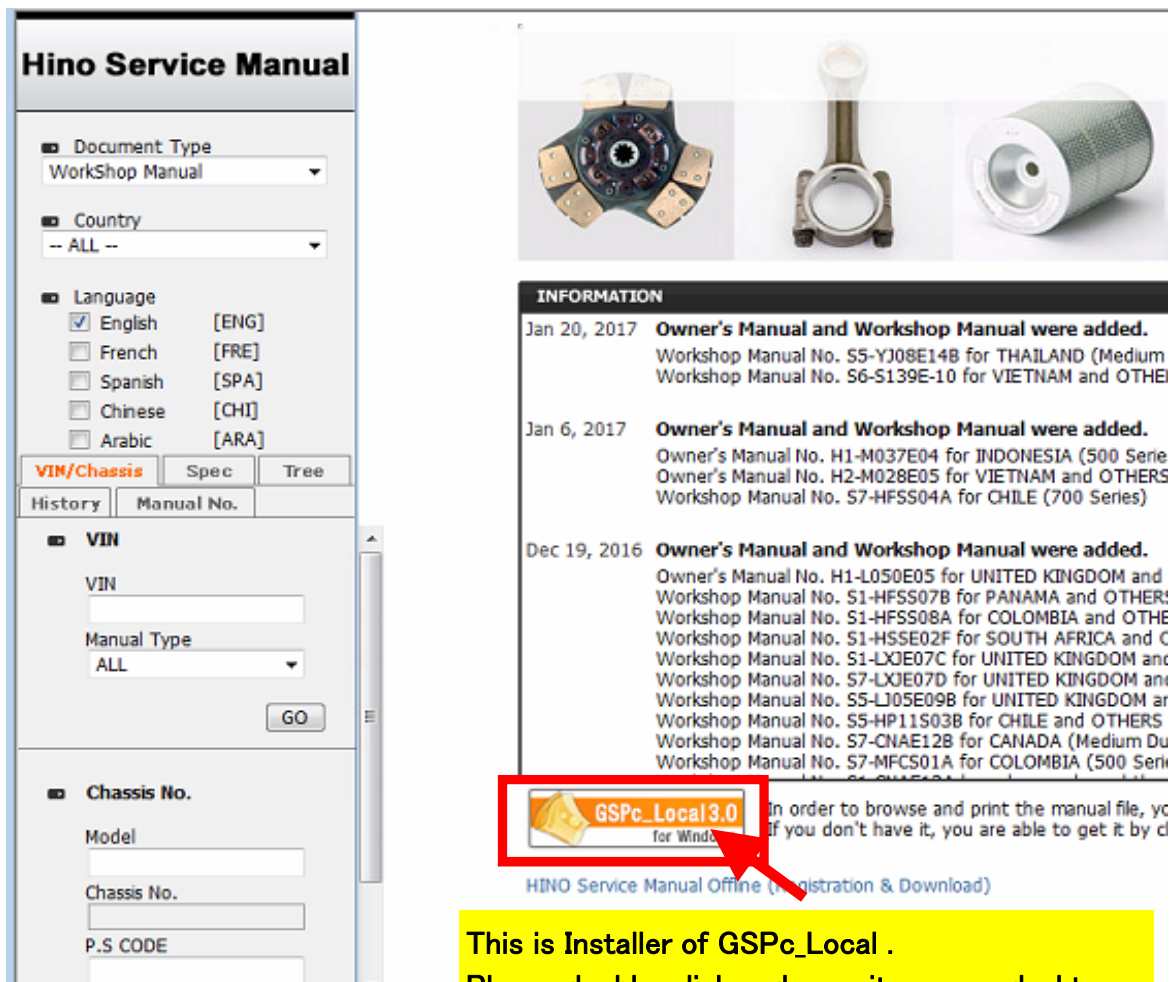


How to install a GSPcLocal 3.0 ver.

1. Please save a GSPcLocal 3.0 ver. on your desktop, from a “**HINO CSS-NET WEB (GSPcLocal Ver.3.0)**” of Hino Global Service Portal Site

☒ **HINO CSS-NET WEB (GSPcLocal Ver.3.0)**



Hino Service Manual

Document Type: Workshop Manual

Country: -- ALL --

Language: ☒ English [ENG], ☐ French [FRE], ☐ Spanish [SPA], ☐ Chinese [CHI], ☐ Arabic [ARA]

VIN/Chassis | Spec | Tree

History | Manual No.

VIN

VIN:

Manual Type: ALL

GO

Chassis No.

Model:

Chassis No.:

P.S CODE:

INFORMATION

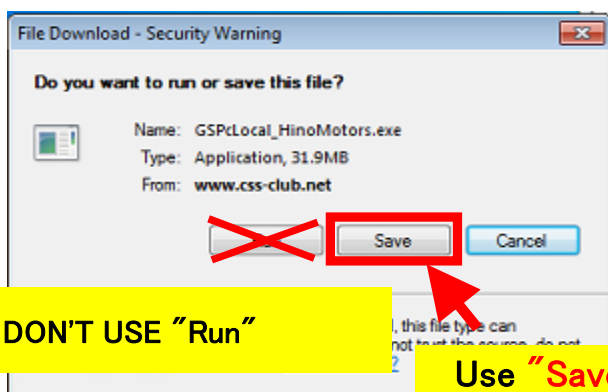
- Jan 20, 2017 **Owner's Manual and Workshop Manual were added.**
Workshop Manual No. S5-YJ08E14B for THAILAND (Medium Workshop Manual No. S6-S139E-10 for VIETNAM and OTH...
- Jan 6, 2017 **Owner's Manual and Workshop Manual were added.**
Owner's Manual No. H1-M037E04 for INDONESIA (500 Serie Owner's Manual No. H2-M028E05 for VIETNAM and OTHERS Workshop Manual No. S7-HF5S04A for CHILE (700 Series)
- Dec 19, 2016 **Owner's Manual and Workshop Manual were added.**
Owner's Manual No. H1-L050E05 for UNITED KINGDOM and Workshop Manual No. S1-HF5S07B for PANAMA and OTHER! Workshop Manual No. S1-HF5S08A for COLOMBIA and OTH... Workshop Manual No. S1-HS5E02F for SOUTH AFRICA and C Workshop Manual No. S1-LX0E07C for UNITED KINGDOM and Workshop Manual No. S7-LX0E07D for UNITED KINGDOM and Workshop Manual No. S5-LJ05E09B for UNITED KINGDOM ar Workshop Manual No. S5-HP11S03B for CHILE and OTHERS Workshop Manual No. S7-CNAE12B for CANADA (Medium Du Workshop Manual No. S7-MFCS01A for COLOMBIA (500 Seri...

GSPc_Local3.0 for Windows

HINO Service Manual Offline (Registration & Download)

This is Installer of GSPc_Local .
Please double-click and save it on your desktop

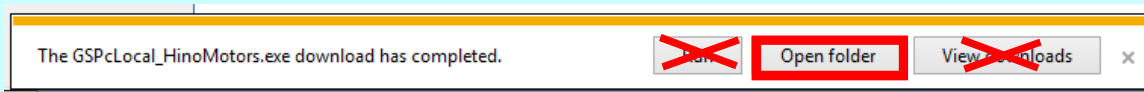
* This security warning pop up is different depending on an Internet explorer version



2. Please right click the exe on your desktop, and click "Run as administrator"

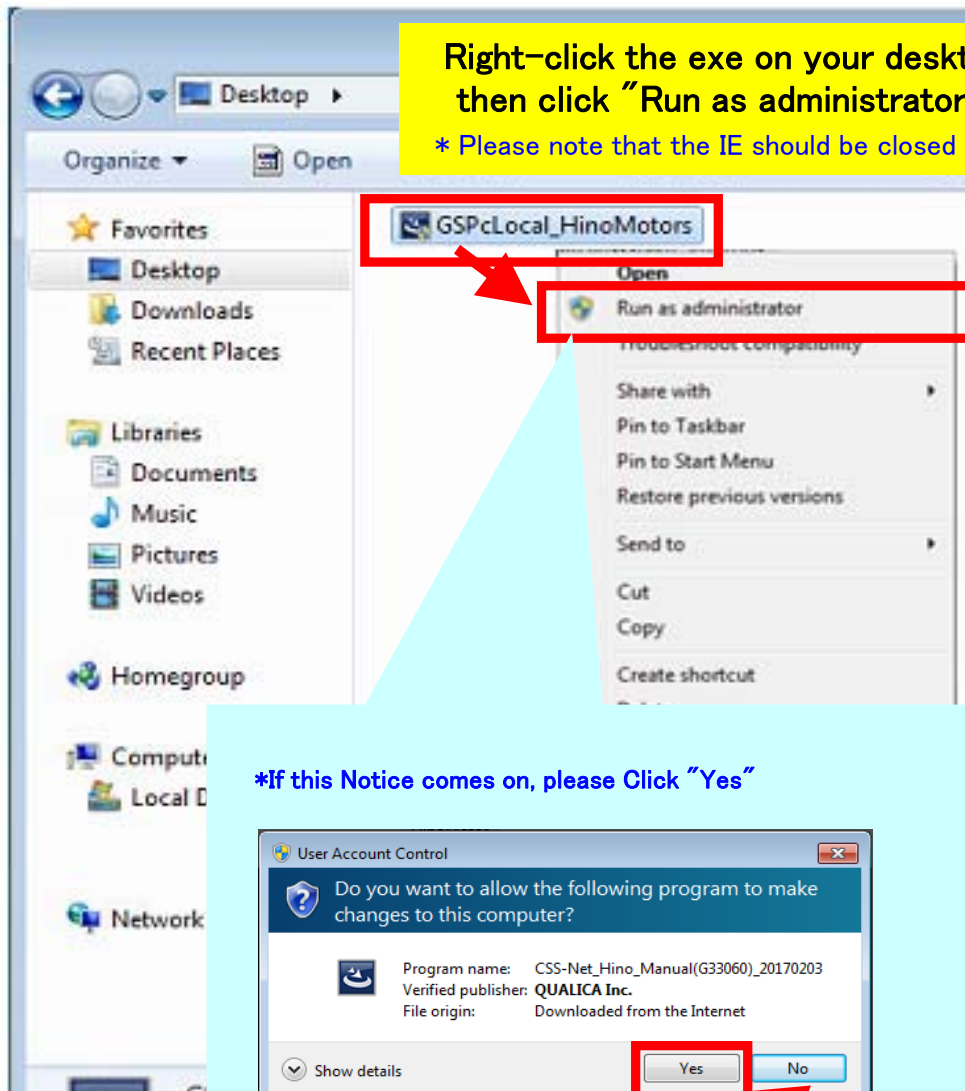
* Please note that the IE should be closed while installing.

* In case of Internet Explorer 11, this pop-up comes on. You can select "Open folder", or close this window and do the following procedure on your desktop.

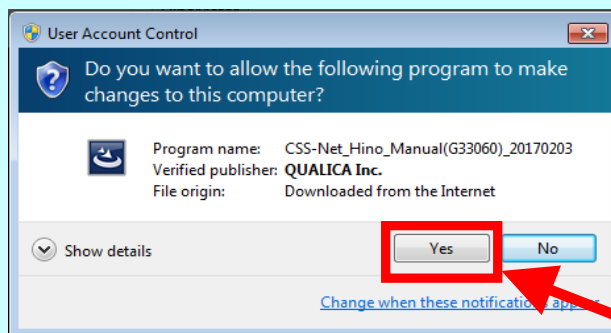


Right-click the exe on your desktop, then click "Run as administrator"

* Please note that the IE should be closed while

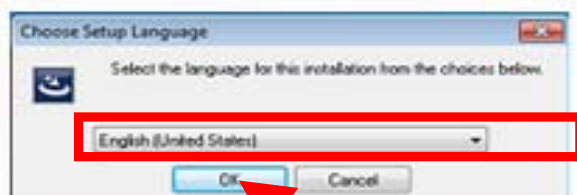


*If this Notice comes on, please Click "Yes"



Click "Yes"

2. As this pop-up comes on, please select down "English (United State)". And then, please install by the following procedure.



Select English.

Click "OK" command

